

POLLINATORS OF B.C.

Female bees are the most important pollinators in our region.

Bees collect pollen and nectar to feed their offspring, so they visit more flowers per unit time and are more likely to contact and move pollen than other flower visitors...but any animal that visits a flower has the potential to be a pollinator! Almost 90% of flowering plants need pollinators to reproduce, so bees are important for ecosystem stability.

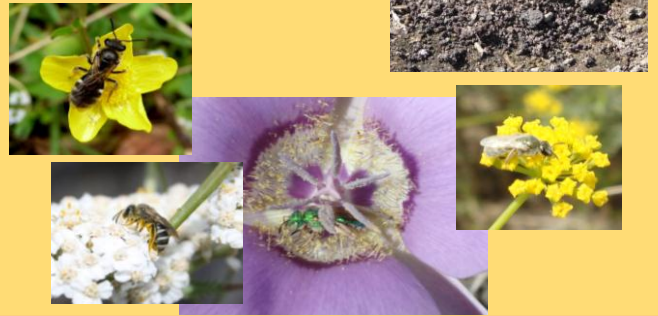
Bumble Bees

- Social (have queens + workers)
- Ground-nesters, need existing holes
- Spring, Summer, early Fall



Sweat Bees

- Solitary to Semi-social
- Ground-nesters
- Spring and summer



Hairy-Belly Bees

- Solitary
- Cavity- or Ground-nesters
- Masons in spring, use mud
- Leafcutters summer, use leaves



"Bees of the world"

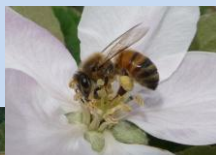
Mining Bees

- Solitary
- Ground-nesters
- Mostly spring



Honey Bees

- Highly Social
- Non-native, managed bees



Others

- Flies, wasps, butterflies, beetles, and birds can all be pollinators



Plants for Bees!

Like all animals, pollinators need two things: food and homes. Different bees make nests in different places and all need pollen and nectar to eat and to feed their young.

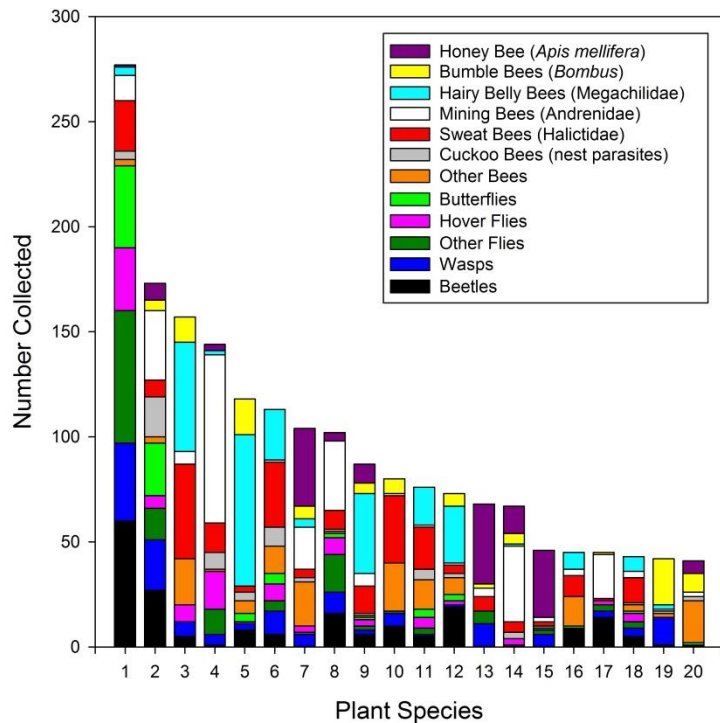
Pollinator-friendly gardens and habitat restorations will:

- Have flowers blooming over a long period of time
- Include flowers of different colours, shapes, and sizes
- Never use insecticides!

Consider this list of pollinator-friendly plants for the south Okanagan!

The graph shows how many pollinators we collected on different plants, and the colours indicate the kind of pollinator. Lots of colours on a big bar means an all-star native plant to consider!

1. Yarrow (*Achillea millefolium*)
2. Parsnip-flowered buckwheat (*Eriogonum heracleoides*)
3. Thread-leaved phacelia (*Phacelia linearis*)
4. Nine-leaved desert parsley (*Lomatium triternatum*) & Wyeth biscuitroot (*Lomatium ambiguum*)
5. Brown-eyed Susan (*Gaillardia aristata*)
6. Shaggy daisy (*Erigeron pumilus*)
7. Wax currant (*Ribes cereum*)
8. Large-fruited desert parsley (*Lomatium macrocarpum*)
9. Arrowleaf balsamroot (*Balsamorhiza sagittata*)
10. Sagebrush mariposa lily (*Calochortus macrocarpus*)
11. Three-nerved daisy (*Erigeron subtrinervis*)
12. Slender hawksbeard (*Crepis atribarba*)
13. Saskatoon (*Amelanchier alnifolia*)
14. Smooth fringecup (*Lithophragma glabrum*) & small-flowered woodland star (*Lithophragma parviflorum*)
15. Antelope-brush (*Purshia tridentata*)
16. Bitterroot (*Lewisia rediviva*)
17. Meadow death-camas (*Zigadenus venenosus*)
18. Thread-leaved daisy (*Erigeron filifolius*)
19. Common snowberry (*Symphoricarpos albus*)
20. Lemonweed (*Lithospermum ruderales*)



Note: # 4 and 14 are pairs of related species that could not be readily distinguished when we were catching pollinators.

Data + photos: Sherri Elwell and Elizabeth Elle

